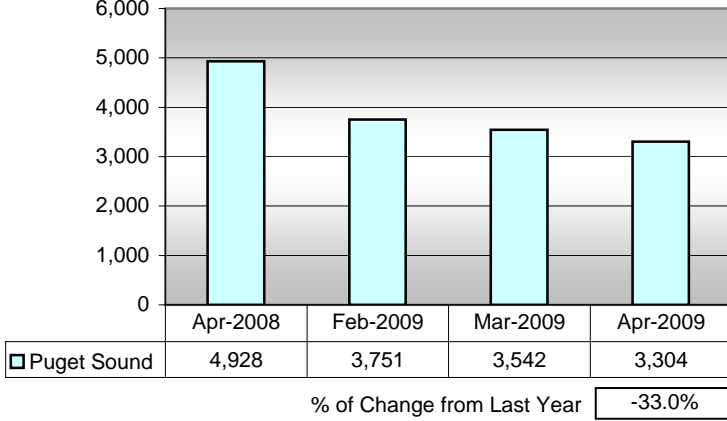


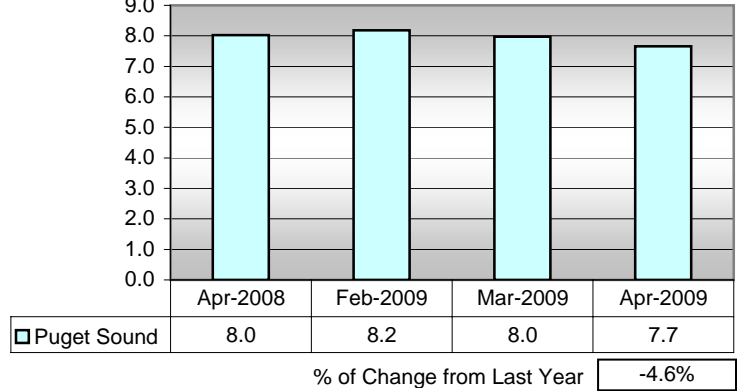
New Home Trends Inc. Monthly Monitor Puget Sound Metro Market

New Construction - Single-Family Residential Real Estate

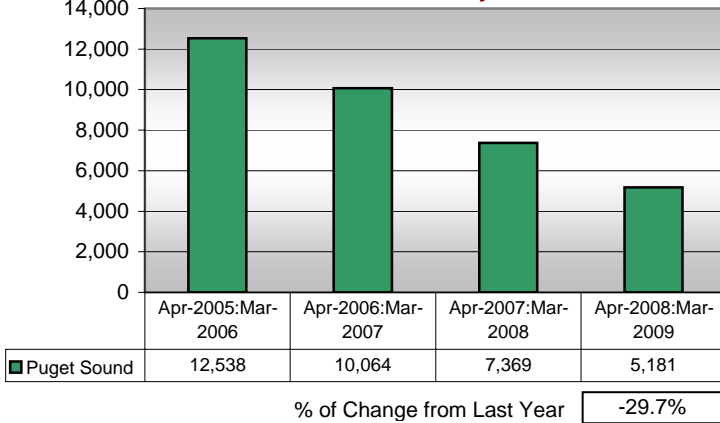
Unsold Available Spec Homes



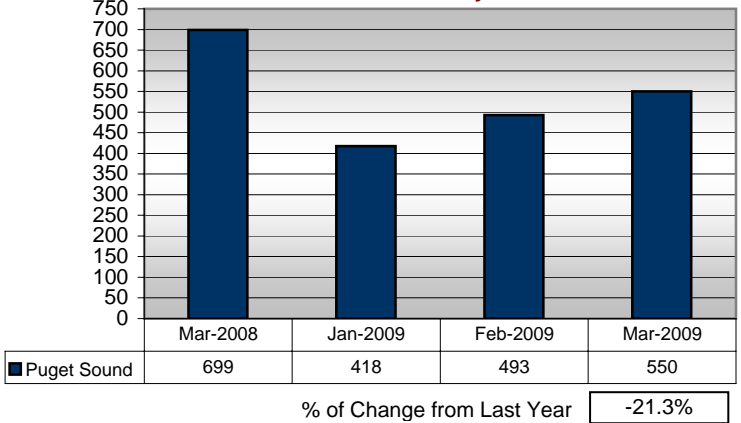
Remaining Months of Unsold Spec Inventory
(based on 12 mos sales)



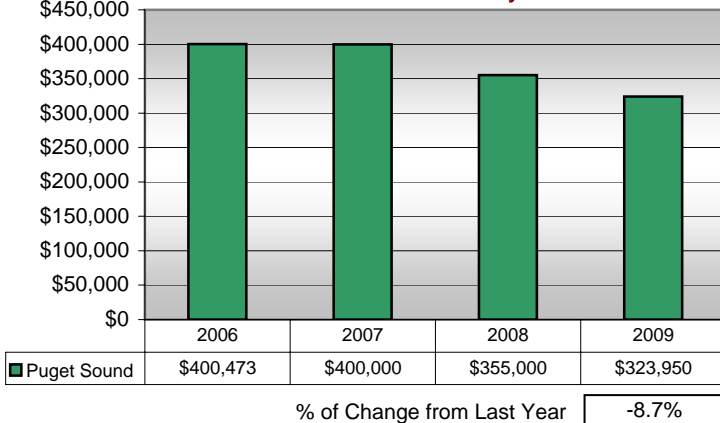
New Home Sales Written by Year



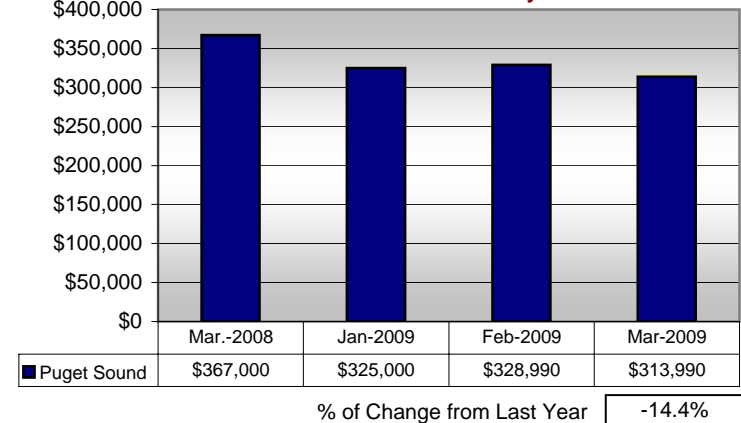
New Home Sales Written by Month



Median New Home Sales Price by Year

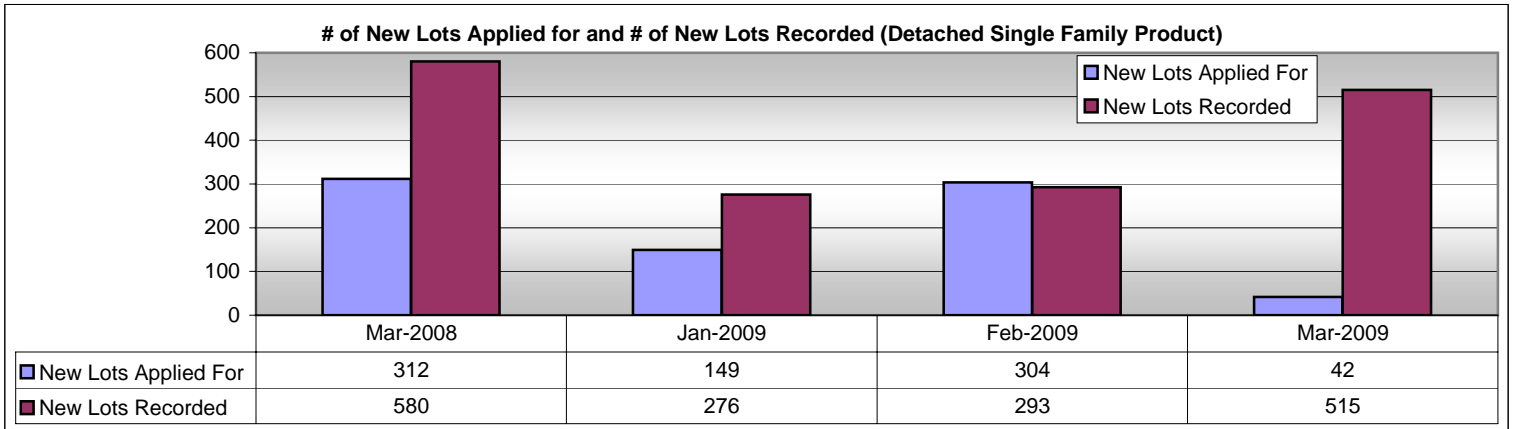


Median New Home Sales Price by Month



New Home Trends Inc.
Monthly Monitor
Puget Sound Metro Market

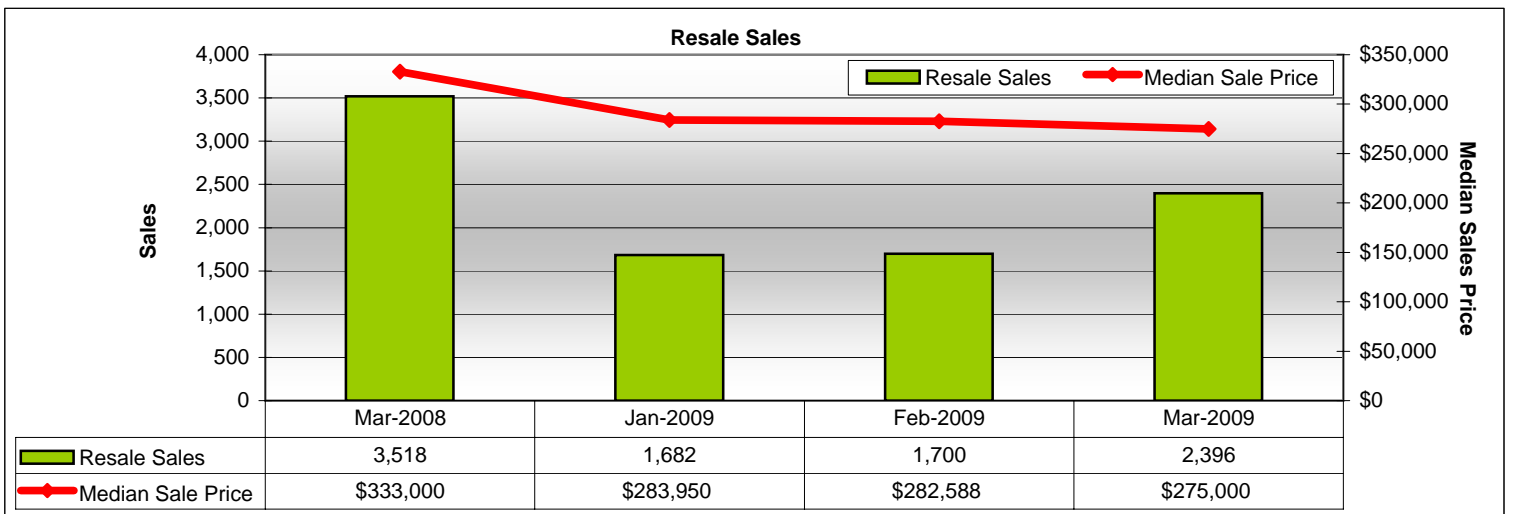
New Construction - Single-Family Residential Real Estate



New Lots Applied for % of Change from Last Year -86.5%

New Lots Recorded % of Change from Last Year -11.2%

Resale - Single Family Residential Real Estate



Resale Sales % of Change from Last Year -31.9%

Median Price Resale Sales % of Change from Last Year -17.4%

New Home Trends Inc.
Monthly Monitor
Puget Sound Metro Market

Employment & Foreclosures

	Unemployment Rate			
	Dec-08	Jan-09	Feb-09	Mar-09
Seattle-Bellevue-Everett, WA	6.1	7.1	8.3	8.4

	Employment			
	Dec-08	Jan-09	Feb-09	Mar-09
Seattle-Bellevue-Everett, WA	1,388,410	1,361,350	1,369,240	1,366,440
Change		-27,060	7,890	-2,800

	Washington State Foreclosures			
	Dec-08	Jan-09	Feb-09	Mar-09
Properties with Foreclosure Filing	2,769	3,140	3,021	4,236
State Foreclosure Rank	23	28	24	17

Data Sources:

New Construction - New Home Trends Inc.

Resale - NWMLS

Employment: Washington State Employment Security Department

Foreclosures: realtytrac.com